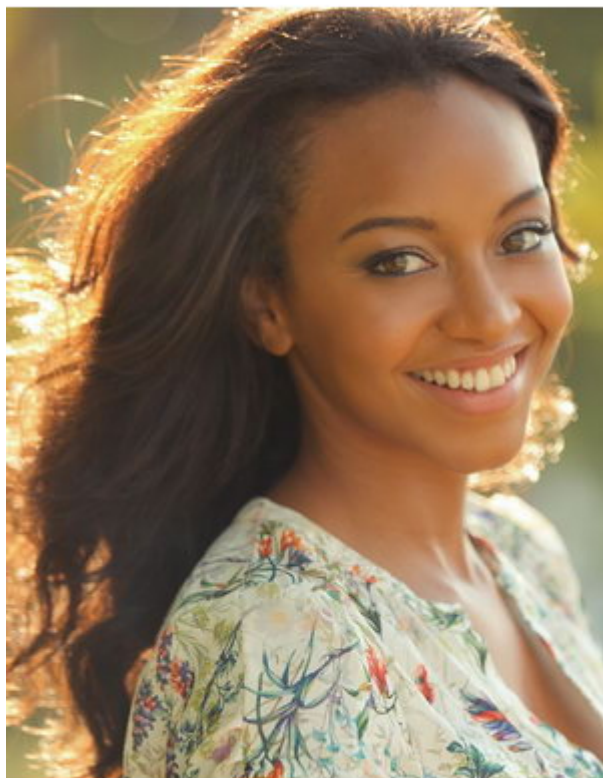


Jennifer Wicks • Height 5' 7.5" • Dress 4 • Bra 34B • Waist 25" • Hip 35" • Inseam 32" • Shoe 7 • Hair Brown • Eyes Hazel



275 Union Blvd • Penthouse 1700 • Saint Louis, Missouri • 63108 • 314 421 9400 • Fax 314 421 9440

Jennifer Wicks • Height 5' 7.5" • Dress 4 • Bra 34B • Waist 25" • Hip 35" • Inseam 32" • Shoe 7 • Hair Brown • Eyes Hazel



275 Union Blvd • Penthouse 1700 • Saint Louis, Missouri • 63108 • 314 421 9400 • Fax 314 421 9440

Jennifer Wicks • Height 5' 7.5" • Dress 4 • Bra 34B • Waist 25" • Hip 35" • Inseam 32" • Shoe 7 • Hair Brown • Eyes Hazel



275 Union Blvd • Penthouse 1700 • Saint Louis, Missouri • 63108 • 314 421 9400 • Fax 314 421 9440

Jennifer Wicks • Height 5' 7.5" • Dress 4 • Bra 34B • Waist 25" • Hip 35" • Inseam 32" • Shoe 7 • Hair Brown • Eyes Hazel



275 Union Blvd • Penthouse 1700 • Saint Louis, Missouri • 63108 • 314 421 9400 • Fax 314 421 9440

Jennifer Wicks • Height 5' 7.5" • Dress 4 • Bra 34B • Waist 25" • Hip 35" • Inseam 32" • Shoe 7 • Hair Brown • Eyes Hazel



275 Union Blvd • Penthouse 1700 • Saint Louis, Missouri • 63108 • 314 421 9400 • Fax 314 421 9440

Jennifer Wicks • Height 5' 7.5" • Dress 4 • Bra 34B • Waist 25" • Hip 35" • Inseam 32" • Shoe 7 • Hair Brown • Eyes Hazel



275 Union Blvd • Penthouse 1700 • Saint Louis, Missouri • 63108 • 314 421 9400 • Fax 314 421 9440

Jennifer Wicks • Height 5' 7.5" • Dress 4 • Bra 34B • Waist 25" • Hip 35" • Inseam 32" • Shoe 7 • Hair Brown • Eyes Hazel



275 Union Blvd • Penthouse 1700 • Saint Louis, Missouri • 63108 • 314 421 9400 • Fax 314 421 9440

Jennifer Wicks • Height 5' 7.5" • Dress 4 • Bra 34B • Waist 25" • Hip 35" • Inseam 32" • Shoe 7 • Hair Brown • Eyes Hazel



275 Union Blvd • Penthouse 1700 • Saint Louis, Missouri • 63108 • 314 421 9400 • Fax 314 421 9440